

N-SW 45

SW Range: 0.8 GHz - 4 GHz / 45 W CW



Prana N-SW 45

- Class A solid state
- Broadband (instantaneous single band): 0.8 GHz – 4 GHz
- Typical output power : 45 W CW
- Linear output power guaranteed with harmonics < -20 dBc
- Air cooling: self contained fans
- Can operate in full mismatch conditions without damage
- Upgradable to N-SW 80 possible
- Reliable, efficient and robust
- 19" Rack
- 3 years standard warranty

Maintenance

- Amplifier designed for minimal maintenance
 - Easy access to all parts
 - Modular design
 - Repairs with minimum adjustments
- Rapid diagnostic
- Minimal downtime
- Contract for preventive and corrective maintenance available

Applications

- EMC tests
- RF tests and instrumentation
- Radiocommunication
- Measurement and research laboratories

Versions

- N-SW 45 S : standard amplifier
- N-SW 45 D amplifier with:
 - Multicolor LCD display with touch panel
 - Digital control
 - IEEE 488 GPIB, Ethernet, USB, RS232 Communications
 - Temperature controlled fans
 - Safety interlock
- N-SW 45 SC : N-SW 45 S with
 - Integrated bidirectional coupler
- N-SW 45 DC : N-SW 45 D with :
 - Integrated bidirectional coupler
 - display of instantaneous power

SW Range

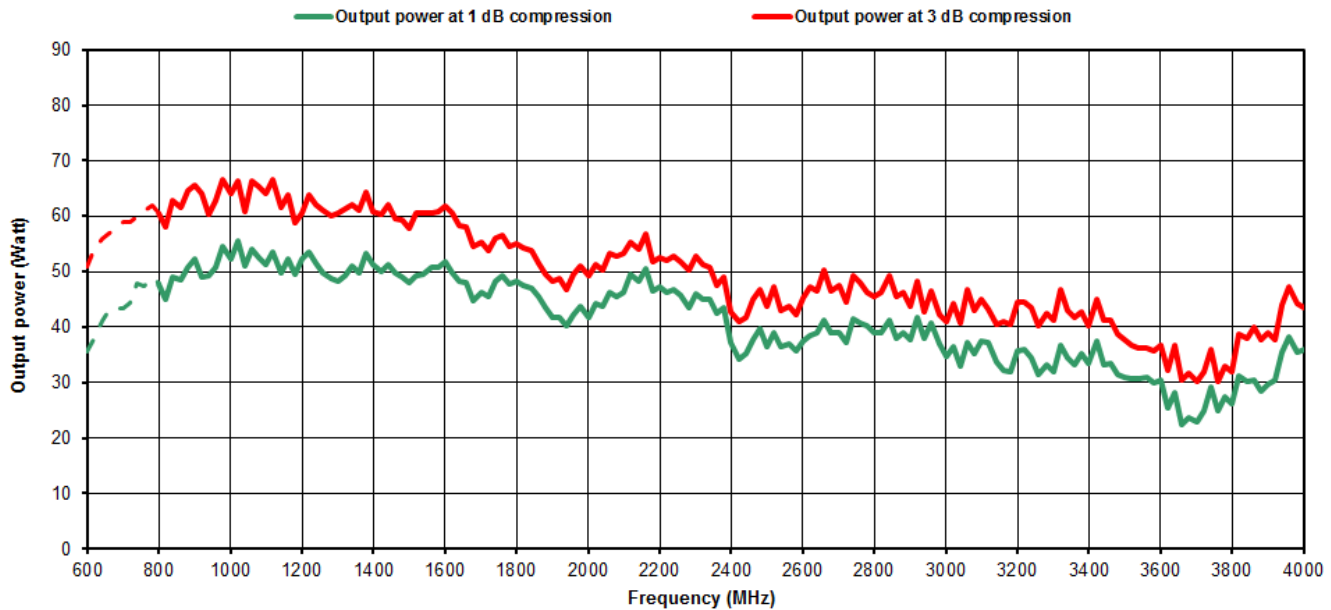
- N-SW 25 => 25 W CW
- N-SW 45 => 45 W CW
- N-SW 80 => 80 W CW
- SW 100 => 100 W CW
- SW 200 => 200 W CW
- SW 420 => 420 W CW
- SW 800 => 800 W CW

Extra

- External coupler
- Supply and integration inside a cabinet
- RF Power cable
- Switching unit

N-SW 45

SW Range: 0.8 GHz - 4 GHz / 45 W CW



Specifications

Frequency bandwidth	0.8 GHz - 4 GHz
Typical output power	45 W
Power at 3 dB compression	40 W min. up to 2.5 GHz / 25 W min. from 2.5 GHz to 4 GHz
Power at 1 dB compression	30 W min. up to 2.5 GHz / 20 W min. from 2.5 GHz to 4 GHz
Harmonics distortion	H2,H3 < -20 dBc for the output power at 1 dB compression
Class type	Class A
Gain	55 dB
Linear power gain flatness	± 5 dB max
Mismatch tolerance	infinite without damage
Input impedance	50 ohms / VSWR: 2:1 max
Output impedance	50 ohms / VSWR: 2:1 max
Input power	0 dBm max.
RF input connector	Type N fem. (front or rear panel) – other connector type on request
RF output connector	Type N fem. (front or rear panel) – other connector type on request
Ambient operating temperature	0 °C / + 35 °C
Room temperature storage	-20 °C / +70 °C
Cooling	Forced air with fan speed control (for D version): 60 l/sec max.
Power voltage	90-250 VAC, 47-63 Hz, single phase
Rated current	2.8 A at 110 VAC / 1.4 A at 230 VAC
Dimensions	640 x 450 x 178 mm (4U) / 25.2 x 17.7 x 7 in (4U)
Weight	15 kg / 33 lb

N-SW 45 D version :

Safety interlock	Connector type BNC
Digital control	Transistors, power supplies, temperatures and fans
Communication interface	Ethernet, USB, GPIB, RS232
Color LCD display with touch screen	Status, faults, (direct and reverse instantaneous power for DC version)

N-SW 45 SC and N-SW 45 DC versions :

Integrated bidirectional power coupler	Coupling factor 50 dB typ. (SC version) / 59 dB typ. (DC version)
Power coupling connector	Type N fem. (front or rear panel)
Estimated output power losses due to the coupler	0.4 dB

N-SW4512MAR2020 - Electrical and Mechanical Specifications subject to change without notice.